

UXL 2500 - 2

2V 2500AH

EXTENDED LIFE

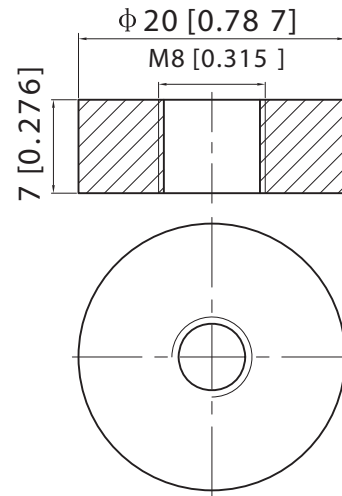
Ultracell®

'Quality in Every Language'

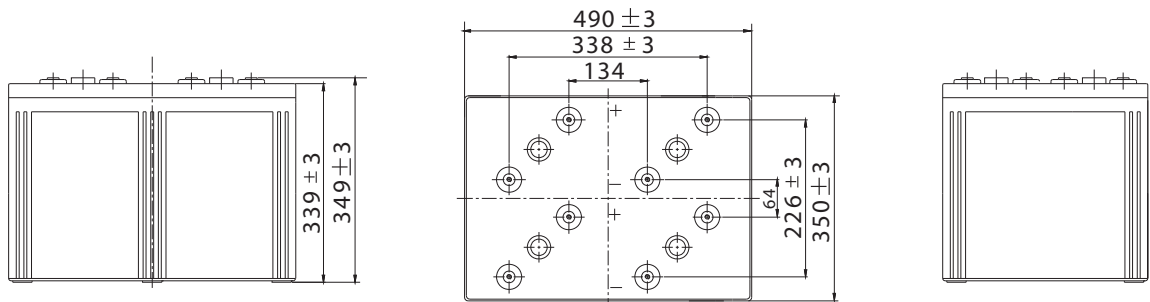
Image

AWAITING IMAGE

Terminal Type



Dimensions



Specifications

| Battery Model | UXL 2500 - 2 | | | |
|----------------------------------|---|----------------------|---------------------|----------------------|
| Designed Floating Life | 15 Years | | | |
| Capacity (25°C) | 20HR (131.3A, 1.80V) | 10HR (250.0A, 1.80V) | 5HR (427.5A, 1.75V) | 1HR (1500.0A, 1.60V) |
| | 2626AH | 2500AH | 2137.5AH | 1500AH |
| Dimensions | Length | Width | Height | Total Height |
| | 490mm | 350mm | 339mm | 349mm |
| Approx. Weight | 132Kg | | | |
| Internal Resistance | Fully Charged at 25°C 0.0005 Ohm | | | |
| Self Discharge | 3% of capacity declined per month at 25°C | | | |
| Capacity Affected by Temperature | 40°C | 25°C | 0°C | -15°C |
| | 102% | 100% | 85% | 65% |
| Charge Voltage (25°C) | Cycle Use | | Float Use | |
| | 2.4-2.5V (-5mV/C), max. Current: 750A | | 2.25-2.3V (-3mV/C) | |

Construction

Component ——— Raw material
 Positive ——— Lead dioxide
 Negative ——— Lead
 Container ——— ABS (Flame Retardent optional)
 Cover ——— ABS (Flame Retardent optional)

Sealed and maintenance free option

Sealant ——— Epoxy Resin
 Safety Valve ——— EPDR
 Terminal ——— Copper
 Separator ——— Fibre Glass
 Electrolyte ——— Sulphuric acid

Non-spillable construction design



Tel | +44 (0) 151 523 2777
Fax | +44 (0) 151 523 0855
E-mail | info@ultracell.co.uk
Web | www.ultracell.co.uk

UXL 2500 - 2

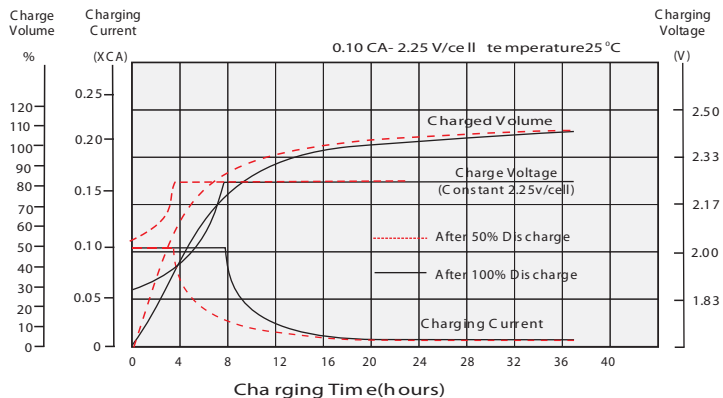
2V 2500AH

EXTENDED LIFE

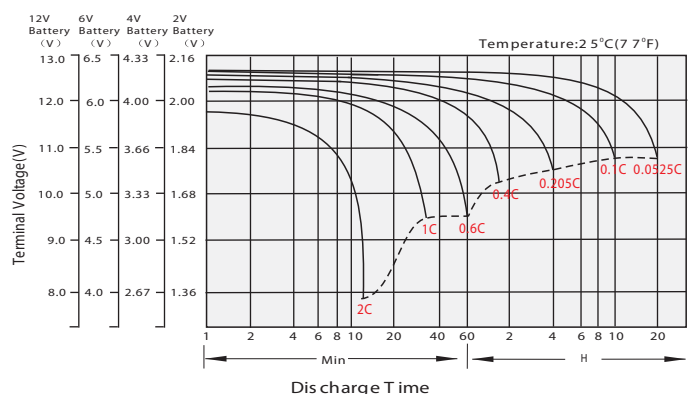
Ultracell®

'Quality in Every Language'

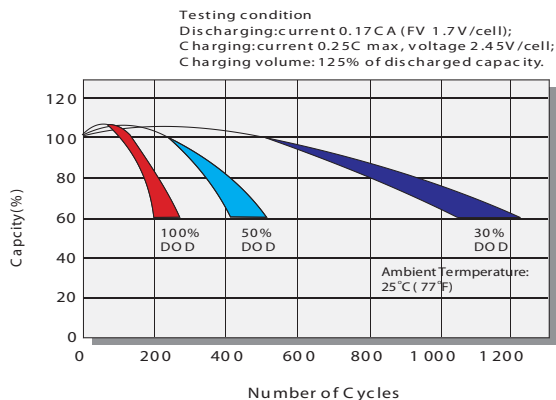
Charge Characteristic



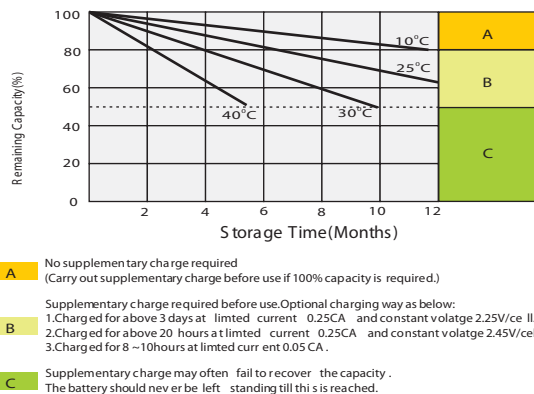
Discharge Characteristic 25°C



Cycle Life in Relationship to Depth of Discharge



Self Discharge Characteristics



Constant Current Discharge Ratings - amperes at 25°C

| F.V / Time | 5 MIN | 10 MIN | 15 MIN | 30 MIN | 1 HR | 3 HR | 5 HR | 10 HR | 20 HR |
|------------|--------|--------|--------|--------|--------|-------|-------|-------|-------|
| 1.60 V | / | / | 3849.6 | 2487.6 | 1500.0 | 701.7 | 478.2 | 274.0 | 142.3 |
| 1.67 V | / | / | 3424.8 | 2274.3 | 1397.1 | 673.3 | 457.0 | 265.5 | 138.0 |
| 1.70 V | / | / | 3219.0 | 2170.5 | 1344.5 | 652.5 | 444.8 | 261.3 | 135.8 |
| 1.75 V | / | 3466.3 | 2912.4 | 1997.5 | 1270.1 | 625.0 | 427.5 | 255.0 | 132.9 |
| 1.80 V | 3550.1 | 3007.5 | 2574.3 | 1836.4 | 1180.3 | 615.0 | 407.5 | 250.0 | 131.3 |
| 1.85 V | 2916.8 | 2569.9 | 2259.0 | 1671.3 | 1108.0 | 567.5 | 391.7 | 238.8 | 126.6 |

Constant Power Discharge Ratings - watts at 25°C

| F.V / Time | 5 MIN | 10 MIN | 15 MIN | 30 MIN | 1 HR | 3 HR | 5 HR | 10 HR | 20 HR |
|------------|--------|--------|--------|--------|--------|--------|-------|-------|-------|
| 1.60 V | / | / | 6774.6 | 4559.8 | 2835.0 | 1347.2 | 926.9 | 541.3 | 281.5 |
| 1.67 V | / | / | 6127.7 | 4197.9 | 2654.4 | 1298.7 | 888.7 | 525.4 | 273.6 |
| 1.70 V | / | / | 5803.8 | 4039.3 | 2573.0 | 1263.9 | 867.9 | 517.8 | 269.4 |
| 1.75 V | / | 6224.7 | 5324.7 | 3738.0 | 2438.3 | 1212.9 | 835.6 | 505.8 | 264.0 |
| 1.80 V | 6457.2 | 5520.2 | 4764.8 | 3464.8 | 2276.3 | 1198.1 | 799.2 | 496.5 | 260.9 |
| 1.85 V | 5362.2 | 4772.9 | 4237.8 | 3202.1 | 2148.3 | 111.9 | 771.8 | 474.9 | 252.1 |



Tel +44 (0) 151 523 2777
 Fax +44 (0) 151 523 0855
 E-mail info@ultracell.co.uk
 Web www.ultracell.co.uk