

# UzV 200-2

2V 200AH

OPzV - UzV

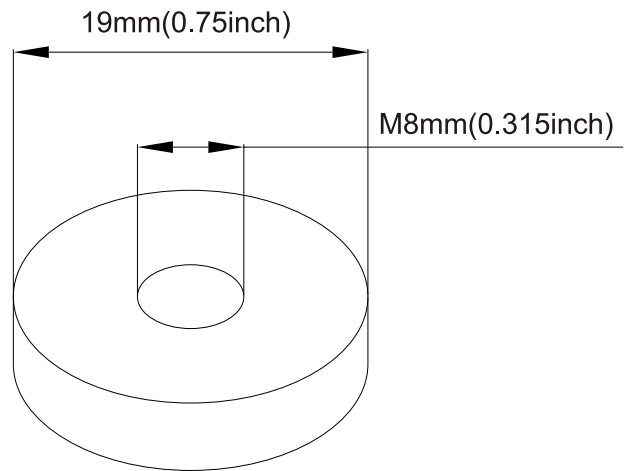
# Ultracell®

'Quality in Every Language'

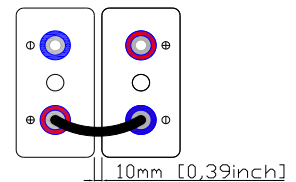
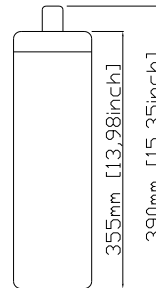
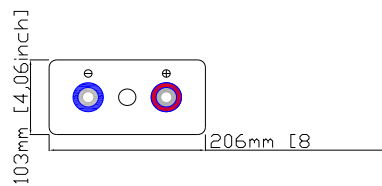
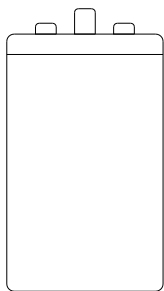
## Image



## Terminal Type



## Dimensions



## Specifications

Battery Model	UzV 200-2			
Designed Floating Life	> 1200 cycles @ 80% DOD			
Capacity (25°C)	10HR (20A, 1.80V)	5HR (34.4A, 1.77V)	3HR (50A, 1.75V)	1HR (106A, 1.67V)
	200AH	172AH	150AH	106AH
Dimensions	Length	Width	Height	Total Height
	206mm	103mm	355mm	390mm
Approx. Weight	18.5Kg +/- 5%			
Internal Resistance	Fully Charged at 20°C 0.008 Ohm			
Self Discharge	3% of capacity declined per month at 20°C			
Capacity Affected by Temperature	40°C	25°C	0°C	-15°C
	102%	100%	85%	65%
Charge Voltage (25°C)	Cycle Use		Float Use	
	2.35V (-20mV/°C), max. Current: 50A		2.25V (-3mV/°C)	

## Construction

Component ——— Raw material  
 Positive ——— Lead dioxide  
 Negative ——— Lead  
 Container ——— ABS (Flame Retardent optional)  
 Cover ——— ABS (Flame Retardent optional)

Sealed and maintenance free option

Sealant ——— Epoxy Resin  
 Safety Valve ——— Rubber  
 Terminal ——— Copper  
 Separator ——— AGM or PVC-SiO<sub>2</sub>  
 Electrolyte ——— Sulphuric acid and SiO<sub>2</sub> colloid

Non-spillable construction design



CE 1188



MH 29410

Tel | +44 (0) 151 523 2777  
 Fax | +44 (0) 151 523 0855  
 E-mail | info@ultracell.co.uk  
 Web | www.ultracell.co.uk

# UzV 200 - 2

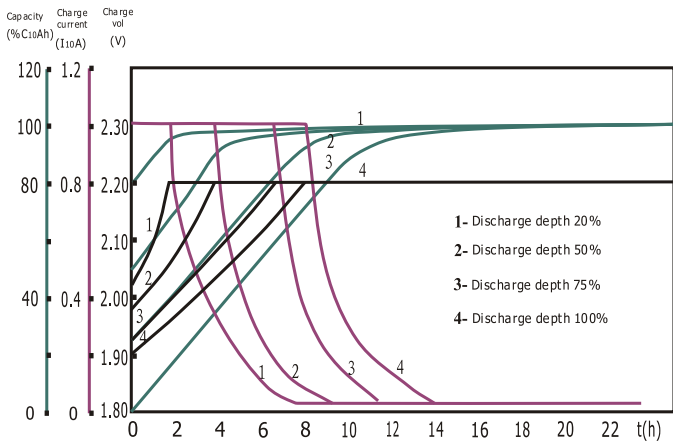
2V 200AH

OPzV - UzV

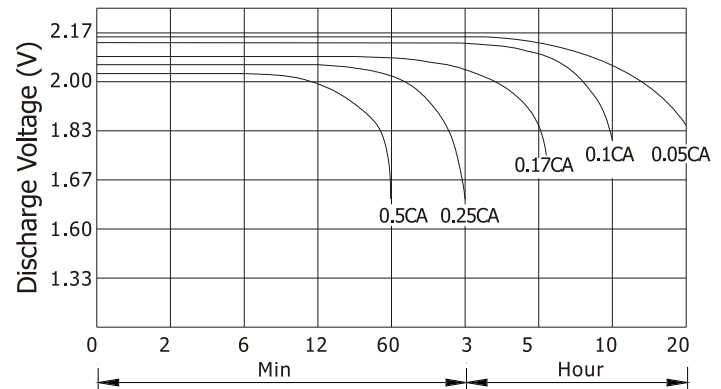
# Ultracell®

'Quality in Every Language'

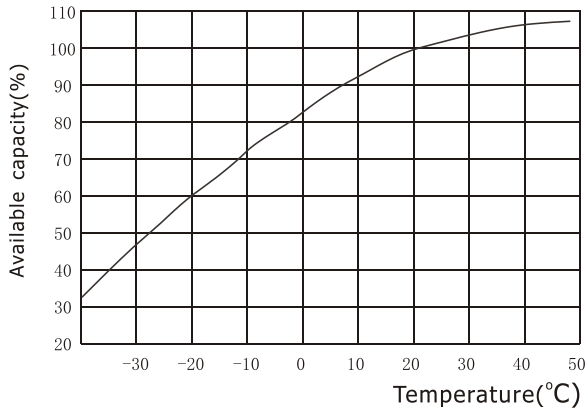
## Charge Characteristic



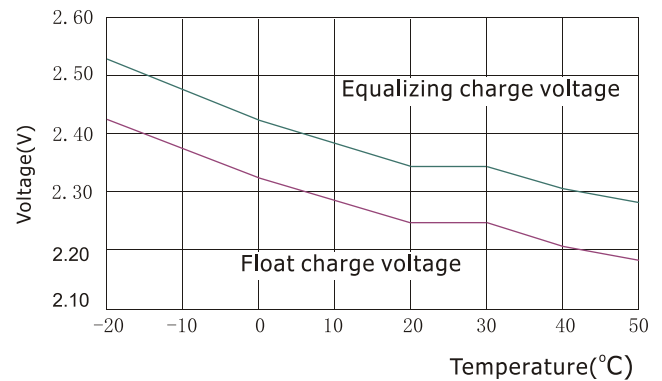
## Discharge Characteristic 25°C



## Available Capacity Vs. Ambient Temperature



## Float Voltage / Equivalent Voltage Vs. Temperature



## Constant Current Discharge Ratings - amperes at 20°C

F.V / Time	5 MIN	15 MIN	30 MIN	1 HR	2 HR	3 HR	4 HR	5 HR	10 HR
1.60 V	350.0	268.0	188.0	120.9	81.4	54.6	47.3	35.9	21.3
1.65 V	336.7	203.2	166.8	115.2	79.6	53.6	46.3	35.8	21.3
1.70 V	311.6	212.0	154.3	103.4	78.5	53.3	46.2	35.5	21.2
1.75 V	291.6	184.8	137.3	100.0	70.0	50.0	42.9	34.9	20.6
1.80 V	256.1	166.6	118.2	84.4	65.9	46.3	40.0	34.0	20.0
1.85 V	216.9	139.1	92.2	65.5	60.5	41.0	36.0	31.9	19.2

## Constant Power Discharge Ratings - watts at 20°C

F.V / Time	5 MIN	15 MIN	30 MIN	1 HR	2 HR	3 HR	4 HR	5 HR	10 HR
1.60 V	595.0	458.3	323.4	218.9	148.1	99.9	87.0	67.2	41.8
1.65 V	582.5	400.5	292.0	210.8	146.4	99.7	86.9	66.9	41.8
1.70 V	548.5	375.2	274.6	191.3	146.0	99.1	86.1	66.7	41.6
1.75 V	522.0	332.6	248.5	187.0	131.6	94.5	81.5	66.4	40.7
1.80 V	466.1	305.0	217.4	159.6	125.2	88.5	76.8	65.6	39.8
1.85 V	407.7	263.0	175.2	126.5	117.3	79.9	70.6	62.9	38.6



Tel +44 (0) 151 523 2777  
 Fax +44 (0) 151 523 0855  
 E-mail info@ultracell.co.uk  
 Web www.ultracell.co.uk